



Model:

218

Product Type:

1/8" PENCIL TYPE DIE GRINDER- 56,000rpm

Foreseen Use of the Tool

Do not use the tool outside of the design intent. Never modify the tool for any other purpose, or for its use.



Safety Precaution

Caution: To help prevent personal injury

- Normal use of this product is likely to expose the user to dust and/or microscopic particles containing chemicals known to the State of California to cause cancer, birth defects or other reproductive harm. Always wear appropriate safety equipment and clothing when using this product. Study, understand and follow all instructions provided with this product.
- Always wear ANSI approved goggles when using this product.
- Always select the correct accessories of the correct size and design for the job that you are attempting to perform.
- Always work in a clean, safe, well-lit, organized and adequately equipped area.
- Do not begin repairs without assurance that vehicle is in secure position, and will not move during repair.
- In order to avoid damage to the tool do not drop or cause any other extreme impact
- Before using the tool assure that the mounted stones, etc. are attached correctly and securely
- Always wear ANSI approved safety goggles when using this unit to guard against eye injury caused by flying particles.
- For best results oil tool daily with air tool lubricating oil

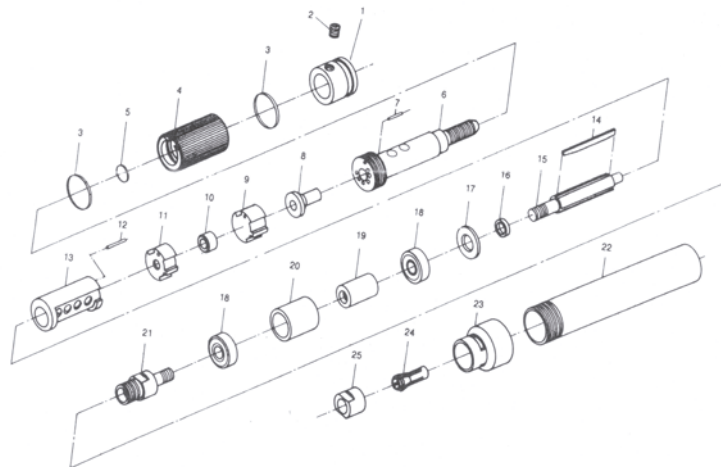


Astro Pneumatic Tool Company

Parts List



*PLEASE REFER PAGE 2 FOR PARTS DETAILS.



Important

Read these instructions carefully before installing, operating, servicing or repairing this tool. Keep these instructions in a safe accessible place.

Unpacking

When unpacking, check the parts diagram and part number listing on page 2 to make sure all parts are included. If any parts are missing or damaged, please call your distributor.

**218 - 1/8" PENCIL TYPE DIE GRINDER-
56,000rpm**

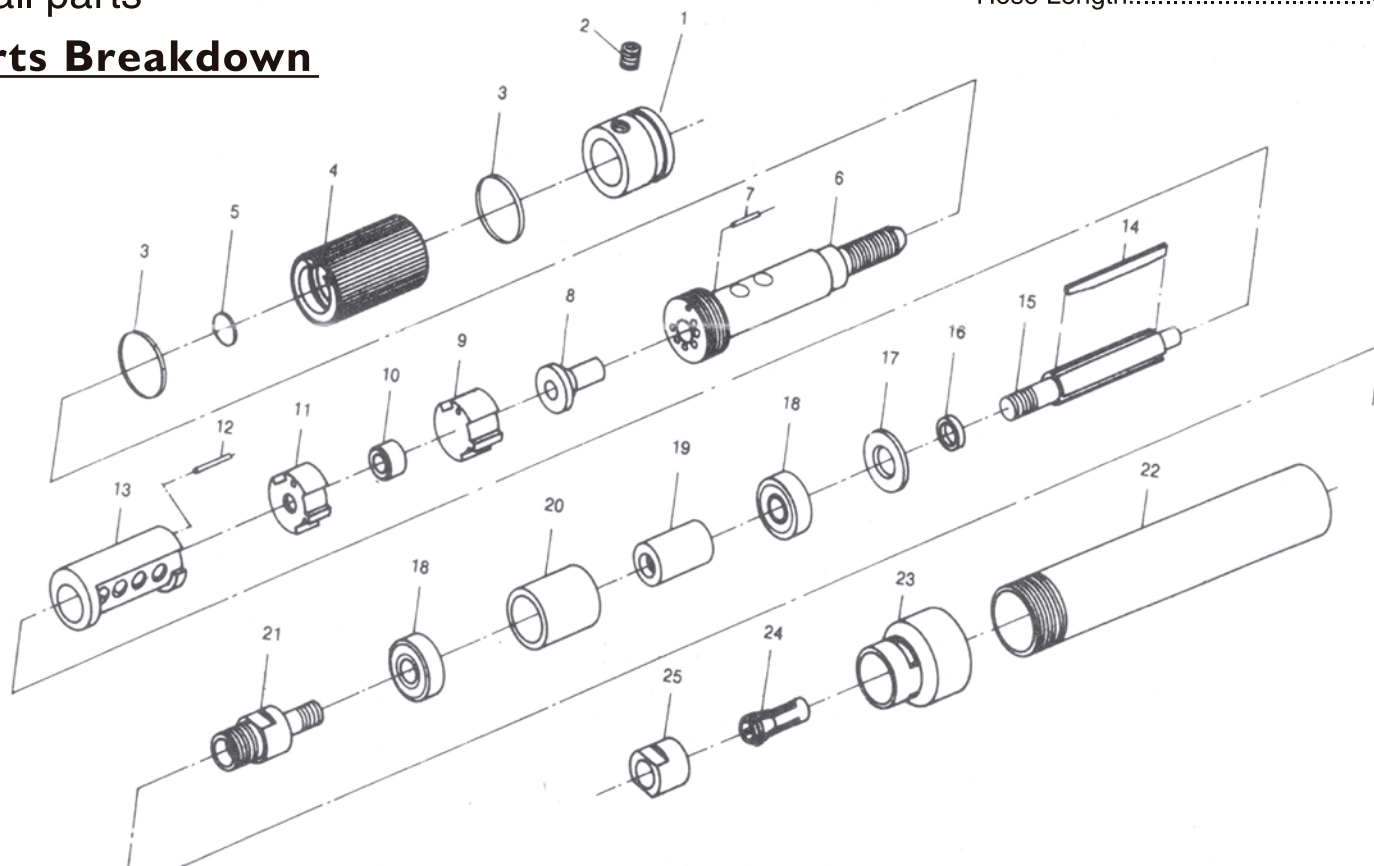
*Ideal for tight spots

*Designed for high speed porting and finishing of small parts

Specifications:

Collet Size:.....1/8"
Free Speed:..... 56,000rpm
Overall Length:.....5-1/4" (133mm)
Net Weight:.....1/4lbs. (.11kg)
Air Inlet Thread NPT:.....1/4"
Air Hose I.D. Size:.....3/8" (10mm)
Avg. Air Consumption:.....4cfm
Air Pressure:.....90-120psi
Hose Length:.....5'

Parts Breakdown



| Astro Parts Number | Description |
|--------------------|-----------------|
| 218-A01 | Rear End Holder |
| 218-A02 | Screw |
| 218-A03 | O-ring |
| 218-A04 | Sliding Knob |
| 218-A05 | O-ring |
| 218-A06 | Hose Plug |
| 218-A07 | Pin |
| 218-A08 | Plug |
| 218-A09 | Intake Plate |
| 218-A10 | Ball Bearing |
| 218-A11 | Bearing Plate |
| 218-A12 | Pin |
| 218-A13 | Cylinder |
| 218-A14 | Rotor Blade |

| Astro Parts Number | Description |
|--------------------|-----------------------------------|
| 218-A15 | Rotor |
| 218-A16 | Spacer |
| 218-A17 | Lateral Disc |
| 218-A18 | Ball Bearing |
| 218-A19 | Interior Bearing Retainer Bushing |
| 218-A20 | Outer Bearing Retainer Bushing |
| 218-A21 | Collet Foundation |
| 218-A22 | Sleeve |
| 218-A23 | Front Cover |
| 218-A24 | Collet |
| 218-A25 | Clamping Nut |
| 218-W | Wrench Set |
| 218-AHWF | Hose with Fitting |