



DO-IT-YOURSELF TRUCK BED PROTECTION
MONSTALINER™

www.monstaliner.com

High Performance Roll-On Bed Liner



World's Toughest Do-It-Yourself Coating!

MONSTALINER™ from Magnet Paints is an advanced high build do-it-yourself bed liner coating engineered for easy roller installation and requires no special skills or equipment to achieve professional results.

Developed for vehicle owners seeking a cost effective, high performance alternative to expensive spray installed bed liners, Monstaliner is 100% UV Permanent and contains no crumb rubber particles which can settle during application causing uneven appearance and a rough, abrasive surface.

As Monstaliner is rolled, texture is pulled up from the coating and the surface cures with a unique raised surface best described as an "eye pleasing bumpiness". High density ceramic core filler helps Monstaliner resist abrasion and impact while creating an impenetrable barrier against moisture and corrosion.

Monstaliner carries a 5 year guarantee against chalking, fading or discoloration and never needs any wax or surface treatments. Once installed, maintaining a Monstaliner truck bed is as easy as sweeping and hosing out dirt and debris.

Monstaliner is supplied in 1 and 2 Gallon Kits with rollers, drill mixing blade and additional tools. Coating Only plus catalyst is also available for spray.

- Easy D.I.Y. Installation
- Professional Results
- 100% UV Permanent
- Up to 40 Dry Mils Thick
- No Crumb Tire Rubber
- Tough Textured Surface
- 1 & 2 Gallon Kit Sizes

From the makers of
CHASSIS SAVER™
 Truck & Auto Underbody Coating



The BIG 2 Gallon Kit includes all tools needed for surface prep and installation.

The Cost Saving Alternative to Professional Spray Installed Bed Liners

- | | | | |
|---------------------|---------------------|-------------------|------------------------|
| ■ Pickup Truck Beds | ■ Auto Undercoating | ■ Trunk Interiors | ■ Horse Trailers |
| ■ Utility Trailers | ■ Running Boards | ■ Fender Wells | ■ Boat Trailers |
| ■ Jeep & 4x4 Tubs | ■ Rocker Panels | ■ Body Panels | ■ Many additional uses |

View extensive project photo archive plus training and application videos at www.monstaliner.com

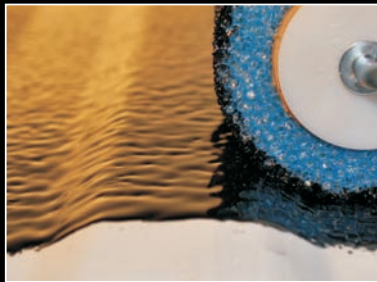
Mix • Pour • Roll!



power mix components thoroughly



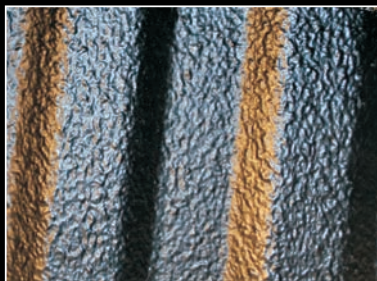
fill the roller pan



contains no rubber chunks



liberal rolling creates the texture



final uniform surface - not too rough

High Performance Protection at a Do-It-Yourself Price - NO BS!

If you've done your bed liner homework, you've learned that professional spray-in liners like Rhino Linings or Line-X can cost more than you feel like spending but protecting your truck bed or jeep tub does not have to empty your pockets. Monstaliner™ is a highly durable, easy to install, do-it-yourself solution that provides truly professional looking results while costing hundreds less than expensive spray installations.



The 1 Gallon Kit includes rollers and basic tools

Kit contents and other installation supplies needed:

- ML90RK2G - Black 2 Gallon Kit includes:** 2 gallons bed liner, 2 pints extreme performance catalyst, 1 roller frame, 3 texture rollers, 1 paint brush, 2 disposable roller pans, 50 ft low-tack masking tape, 2 coarse scuff pads, 8 solvent resistant gloves, 2 wooden mix sticks, 1 drill bit mixing paddle, installation guide
- ML90RK1G - Black 1 Gallon Kit includes:** 1 gallon bed liner, 1 pint extreme performance catalyst, 1 roller frame, 2 texture rollers, 1 paint brush, 1 scuff pad, 2 mix sticks, 1 drill bit mix paddle, installation guide
- ML90+RC1 - Black Coating Only includes:** 1 gallon coating + 1 pint catalyst + drill mixer, install guide
- Additional supplies needed (not included):** MEK solvent (1 quart), detergent or TSP, power drill, clean rags, broom, scrap cardboard, protective eye wear, respirator mask (if working indoors)
- Optional supplies (not included):** Pressure washer, knee pads, wire brush, plastic drop cloth, shop vac

MONSTALINER™ Technical Information

Vehicle Type	Aliphatic dual cure urethane hybrid
Colors	Jet Black (colors and tintable version in development)
Volume Solids	70%
VOC	2.59 #/gal maximum (301 g/l)
Flash Point	110°F (43°C) (UPS Ground Ship Non-Hazardous)
Reduction	Not recommended for roller install, see below for spray
Clean-Up	MEK, Acetone or Xylene
Shelf Life	Minimum 12 months in unopened containers
Application Temp	Minimum surface temp 55°F – Ambient temp 50 - 90°F
Film Thickness	2 rolled coats provides up to 40 dry mils
Coverage	.80 square feet per gallon @ 14 mils DFT 2 gallon kit completes any 8 foot truck bed (2 or 3 coats) 1 gallon kit completes any 6 foot bed or jeep tub (2 coats)
Sprayability	Excellent w/Shutz gun @ 60 - 100 psi, Reduce 10% w/MEK
Mixed Pot Life	8 hours @ 70°F (21°C) and 50% R.H.
Dry to Touch @70°F	3 to 5 hours depending on temperature & humidity
Recoat Time	Roller: 4 to 6 hours (surface should be firm & tack free) Spray: Allow 1 hour between coats.
Return to Service	Light use - 48 hours after final coat, Full service 7 to 10 days
Flexibility	Excellent
Weathering	Excellent - UV permanent, will not chalk, fade or discolor
Resistance To	Abrasion, impact, road salt, gasoline, solvents
Service Temperature	-22°F to 122°F (-30°C to 50°C)

For questions, comments or assistance before using, call Magnet Paints Technical Services, Mon - Fri, 9AM to 4PM EST at 1.800.922.9981 or send an email to info@magnetpaints.com



336 Bayview Avenue • Amityville, NY 11701 • 631-842-7700

www.magnetpaints.com



www.monstaliner.com