



ATD-6900

10PCS HVLP SPRAY GUN SET INSTRUCTION MANUAL

Read this manual carefully and understand it completely.

Retain manual for future use.

Always follow safety precautions to prevent personal injury and/or damage to equipment.

Illustrations and photos are intended for reference only. Actual product may vary. Specifications subject to change without notice.

Important Safety Instructions

1. Always wear eye protection, gloves and respirator to protect against harmful vapors produced when spraying.
2. Never use oxygen or any other combustible or bottled gas as a propellant. Explosion and serious injury or death may result.
3. Many paints and solvents can be highly flammable. Use spray gun only in well ventilated areas. Do not smoke or use near open flame.
4. Always disconnect tool from air source when not in use and during maintenance. For emergency stop and to prevent unintended operation, a valve near the tool is recommended.

5. Inspect the tool before each use to ensure there is no leakage or mis-aligned parts. Be sure trigger moves freely.
6. Never use homogenate hydrocarbon solvent as it can chemically react with the aluminum and zinc parts of this tool.
7. Do not make any modifications to this tool.

Figure1:



Operating Instructions

POWER SOURCE

This tool operates best on a clean, dry supply of compressed air delivered at 21 to 43.5 PSI. Use of a moisture trapping air filter is highly recommended as moisture or foreign matter can damage the internal parts tool.

CAUTION: All air pressure in the system should be rated at 21 to 43.5 PSI. Higher or lower pressure can adversely influence the operation of or cause damage to the tool.

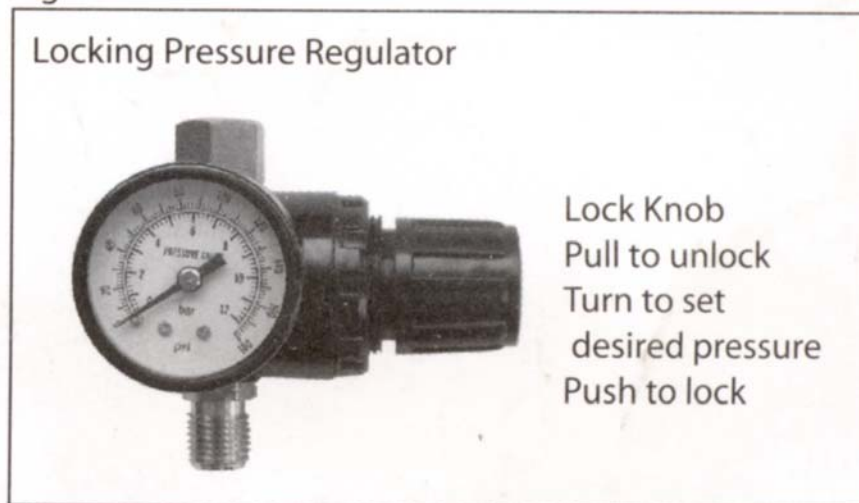
NOTE: To maintain a maximum 10 PSI at nozzle, use a maximum of 43.5 PSI at the inlet.

TOOL PREPARATION

1. Check tool for worn or damaged parts. Repair or replace as necessary.
2. Check trigger to ensure it moves freely.
3. Connect tool to air supply.
4. Adjust air pressure based on paint viscosity and manufacturer's recommendation. (Fig. 2)
5. Pour paint into cup.

Figure 2:

Figure 2.



GUN HANDLING

For best results, please follow these basic guidelines:

1. Keep the spray gun perpendicular to the surface. Spraying in an arc will not give good results. (Fig. 3)
2. Keep gun moving from one side to the other while spraying. If you

stop moving the gun while you are still spraying, too much paint will build up and begin to run. Begin the horizontal movement of the gun BEFORE you begin spraying. Also, keep gun at a constant distance 6 – 12 inches from surface. (Fig. 4)

Figure 3-INCORRECT

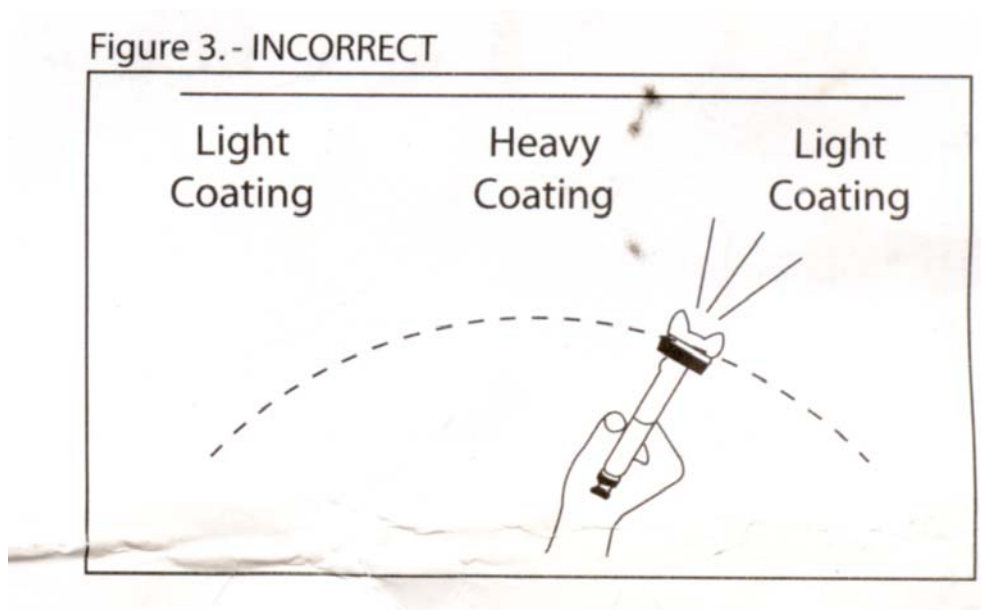
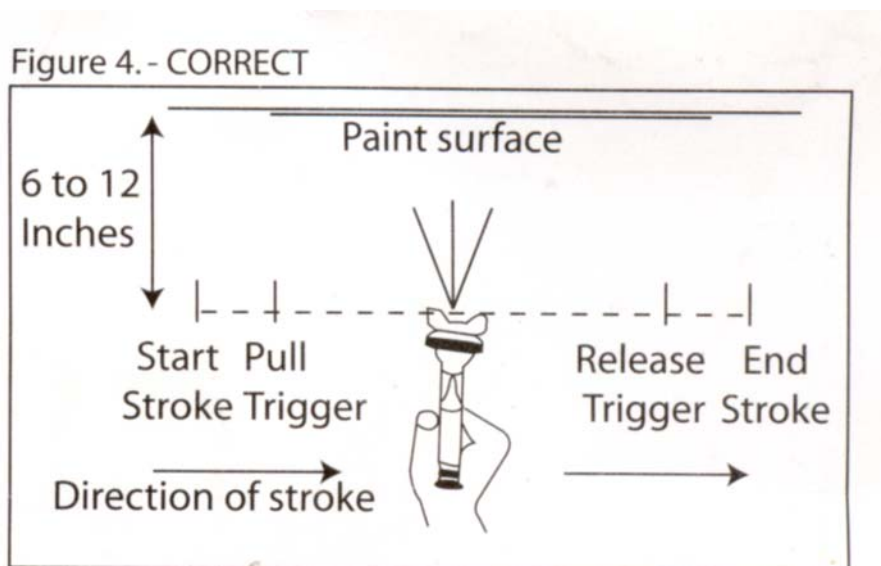


Figure 4—CORRECT

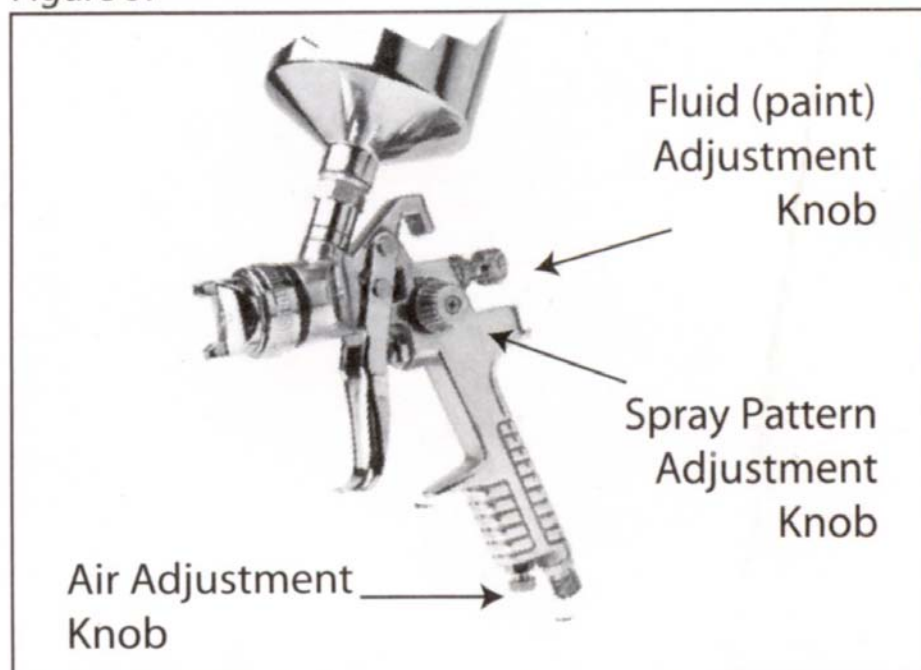


ADJUSTMENT

1. Fine-tune the gun to your desired working settings of spray pattern, fluid output and degree of paint atomization using the 3 controls illustrated in Figure 5.

Figure 5:

Figure 5.

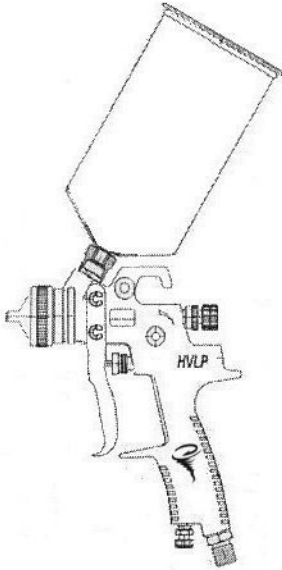


Maintenance

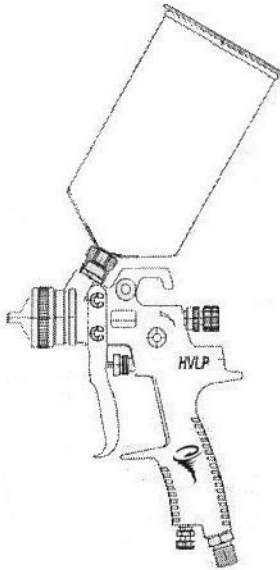
To clean the gun, pour any leftover paint back into its container. Using thinner, clean out the paint cup and cap. Spray some thinner through the gun to clean the spray head, needle and nozzle. Spray until thinner comes out clean. Clean all paint passages as any paint left in the gun and allowed to dry could clog the spray head. Wipe the exterior of the gun with the cleaning brush included and a soft

cloth moistened with thinner. If you remove the needle, remove the nozzle as well to protect the seat. NEVER DIG WITH A WIRE OR HARD OBJECT AT DRIED PAINT ON THE NEEDLE OR NOZZLE AS THIS CAN DAMAGE THE NEEDLE SEAT. Remove all such paint before it has a chance to dry.

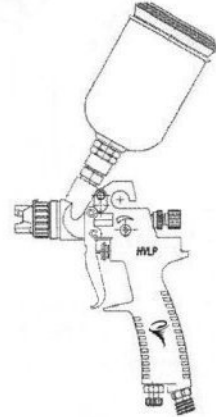
ATD-6900



ATD6901
1.4mm Gun
See drawing for parts



ATD6902
1.8mm Gun
See drawing for parts



ATD6903
1.0mm Gun
See drawing for parts



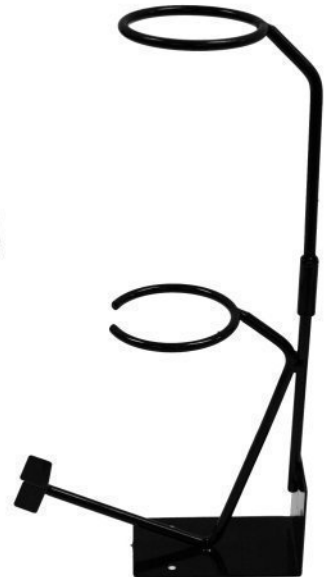
ATD6926
Regulator



PRT6900-TK
Tool / Cleaning Kit



PRT6900-MASK
Disposable Mask

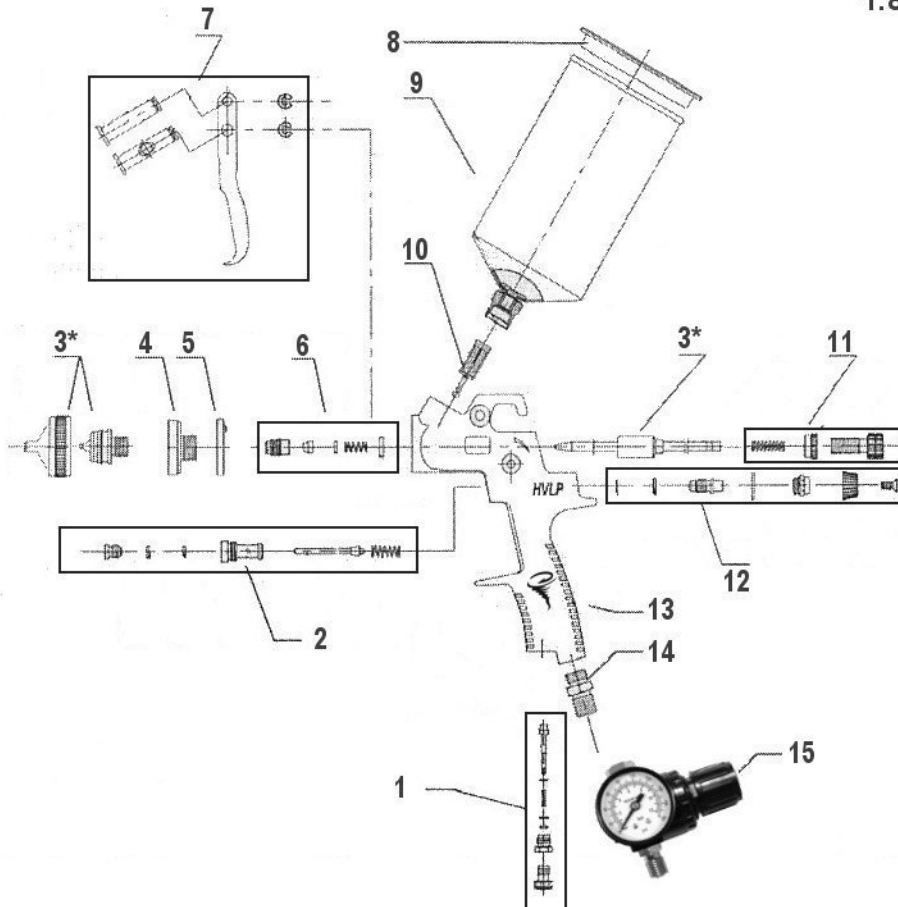


ATD6861
Paint Gun Holder



ATD-6900

1.8mm Gun

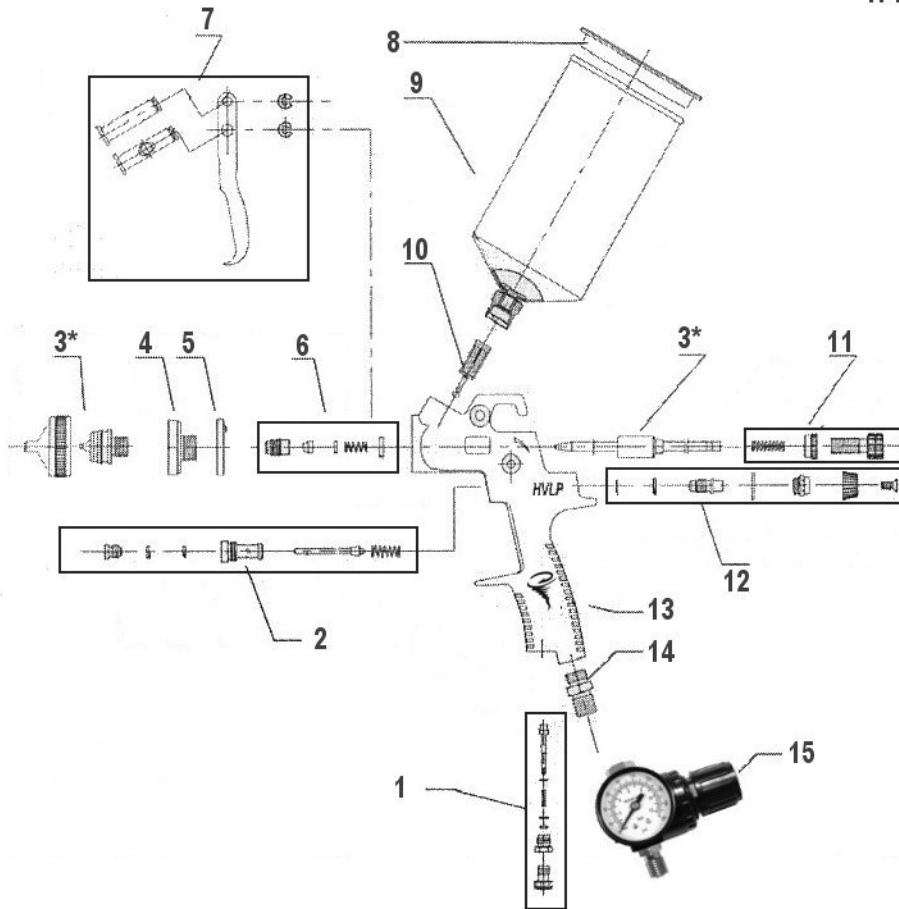


ORDERING PART#	ITEM#	PART DESCRIPTION
PRT6900-01	1	AIR ADJUST ASSEMBLY
PRT6900-02	2	AIR VALVE ASSEMBLY
PRT6900-1.8	3*	1.8mm TIP KIT (NEEDLE, FLUID NOZZLE, AIR CAP)
PRT6900-04	4	FLUID NOZZLE PLUG
PRT6900-05	5	FLUID NOZZLE WASHER
PRT6900-06	6	NEEDLE PACKING ASSEMBLY
PRT6900-07	7	TRIGGER ASSEMBLY
PRT6900-08	8	LID FOR CUP

ORDERING PART#	ITEM#	PART DESCRIPTION
PRT6900-09	09	CUP
ATD6929	10	FILTER, PACK OF 12
PRT6900-11	11	FLUID ADJUST ASSEMBLY
PRT6900-12	12	PATTERN ADJUST ASSEMBLY
PRT6900-13	13	GUN BODY
PRT6900-14	14	AIR INLET FITTING
ATD6926	15	REGULATOR
PRT6900-RK	n/a	REPAIR KIT (ALL SEALS, WASHERS & SPRINGS)

ATD-6900

1.4mm Gun



10

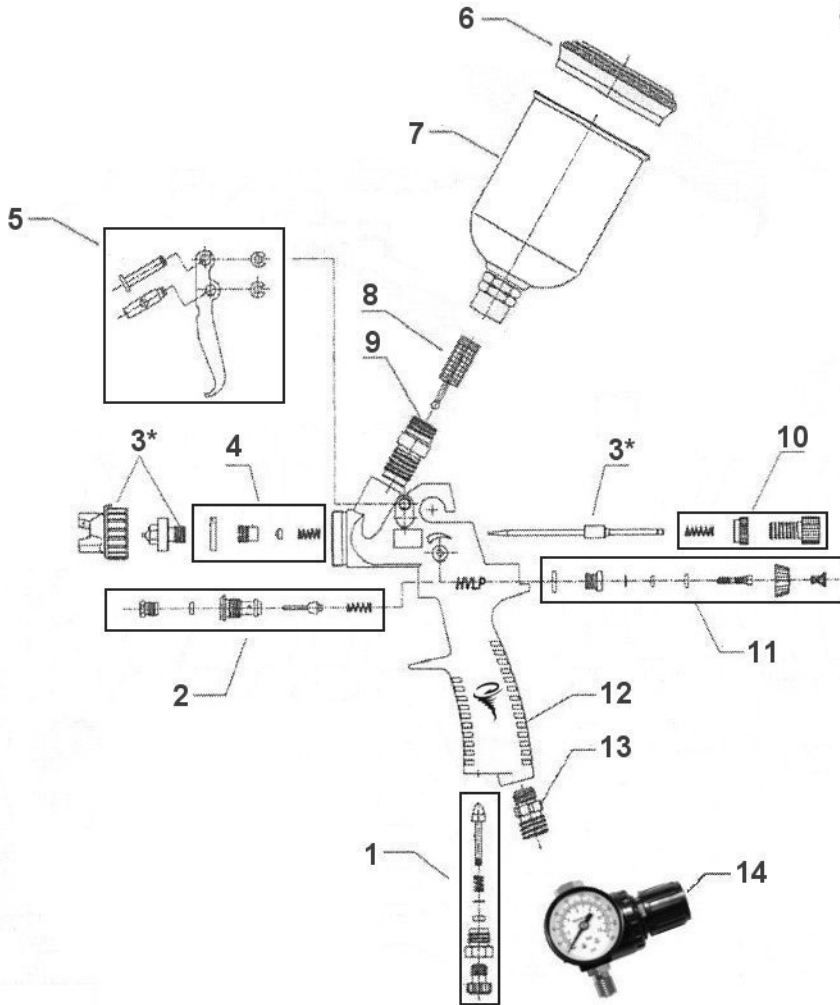
ORDERING PART#	ITEM#	PART DESCRIPTION
PRT6900-01	1	AIR ADJUST ASSEMBLY
PRT6900-02	2	AIR VALVE ASSEMBLY
PRT6900-1.4	3*	1.4mm TIP KIT (NEEDLE, FLUID NOZZLE, AIR CAP)
PRT6900-04	4	FLUID NOZZLE PLUG
PRT6900-05	5	FLUID NOZZLE WASHER
PRT6900-06	6	NEEDLE PACKING ASSEMBLY
PRT6900-07	7	TRIGGER ASSEMBLY
PRT6900-08	8	LID FOR CUP

ORDERING PART#	ITEM#	PART DESCRIPTION
PRT6900-09	09	CUP
ATD6929	10	FILTER, PACK OF 12
PRT6900-11	11	FLUID ADJUST ASSEMBLY
PRT6900-12	12	PATTERN ADJUST ASSEMBLY
PRT6900-13	13	GUN BODY
PRT6900-14	14	AIR INLET FITTING
ATD6926	15	REGULATOR
PRT6900-RK	n/a	REPAIR KIT (ALL SEALS, WASHERS & SPRINGS)



ATD-6900

1.0mm Gun



ORDERING PART#	ITEM#	PART DESCRIPTION
PRT6900-16	1	AIR ADJUST ASSEMBLY
PRT6900-17	2	AIR VALVE ASSEMBLY
PRT6900-1.0	3*	1.0mm TIP KIT (NEEDLE, FLUID NOZZLE, AIR CAP)
PRT6900-18	4	NEEDLE PACKING ASSEMBLY
PRT6900-19	5	TRIGGER ASSEMBLY
PRT6900-20	6	LID FOR CUP
PRT6900-21	7	CUP
ATD6929	8	FILTER, PACK OF 12

ORDERING PART#	ITEM#	PART DESCRIPTION
PRT6900-22	09	FLUID INLET JOINT
PRT6900-23	10	FLUID ADJUST ASSEMBLY
PRT6900-24	11	PATTERN ADJUST ASSEMBLY
PRT6900-25	12	GUN BODY
PRT6900-26	13	AIR INLET FITTING
ATD6926	14	REGULATOR
PRT6900-RK1.0	n/a	REPAIR KIT (ALL SEALS, WASHERS & SPRINGS)