



**ATD-8527**

## **40 GALLON PARTS WASHER INSTRUCTION MANUAL**

### **IMPORTANT SAFETY INSTRUCTIONS**

1. Read all instructions before using this unit.
2. To avoid burns, do not let bare skin touch hot surface.
3. Do not operate the equipment with a damaged cord or if the equipment has been dropped or damaged. Return the equipment to our service center for examination or mechanical adjustments or repair.
4. Keep cord away from heat, oil and sharp edges.
5. Avoid the use of extension cords because the extension cord may overheat and cause a risk of fire.
6. Do not cover the cord with throw rugs, runners or the like. Place cord away from traffic area and where it may be tripped over.
7. Always unplug equipment when not in use. When unplugging the equipment, pull the plug. Don't unplug unit by pulling on the wire.
8. Do not use the unit in areas where gasoline, flammable liquids, fumes and dust are used or stored.
9. Adequate ventilation should be provided when working on operating internal combustion engines.

10. Keep hair, loose clothing, fingers and all parts of body away from working parts.
11. To reduce the risk of electric shock, do not use on wet surfaces or expose to rain.
12. Use the equipment only as described in this manual. Use only manufacturer's recommended attachments.
13. **ALWAYS WEAR SAFETY GLASSES.** Everyday eyeglasses only have impact resistant lenses, they are **NOT** safety glasses.
14. **USE AQUEOUS BASED SOLVENTS THAT ARE RECOMMENDED FOR THIS PARTS WASHER ONLY**
15. **WARNING:** Do not fill parts washer above the top fluid level mark.

**SAVE THESE INSTRUCTIONS**

## **ASSEMBLY INSTRUCTIONS:**

1. Remove machine from carton and inspect for any visual damage.
2. Remove parts from inside the machine
3. Lay clean and hard cardboard on the floor to lay machine on its lid on.  
(Make sure to hold the cover closed when laying machine on its lid.)

4. Mount four legs on brackets with M6x12 screws and M6 nut.

### **NOTE: DO NOT TIGHTEN SCREWS YET**

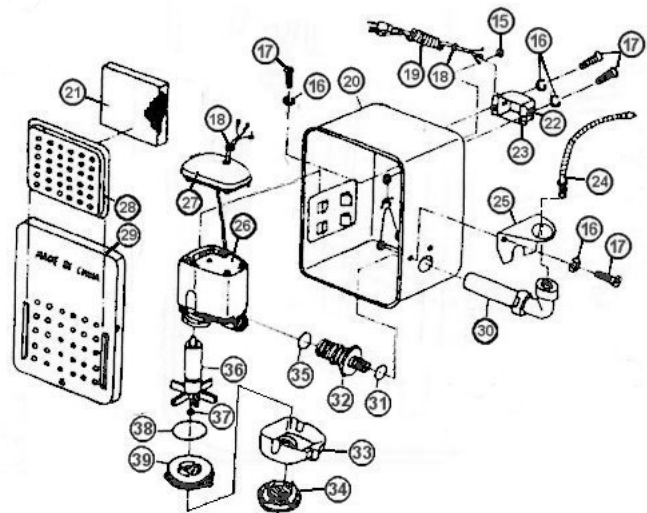
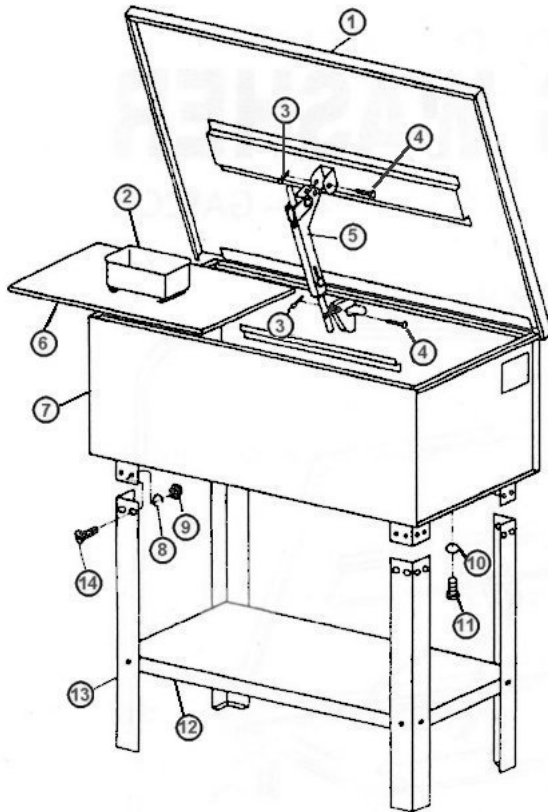
5. Place lower shelf between legs with flat surface up and attach to legs with M6X12 screws and M6 nuts.
6. With legs pressed tight against lower shelf, tighten all screws to lower shelf
7. Tighten all the screws installed in step 4
8. Stand machine up, be careful to hold lid closed
9. Put work shelf and basket into the machine
10. Mount pump assembly into slot on the side of the machine then place filter screen in position
11. Plug machine into standard 120V60Hz grounded outlet and fill with proper amount of fluid
12. Turn switch on. Fluid should now be flowing from the flexible spigot.

**TECHNICAL SPECIFICATION:**

Model	ATD-8527
Overall Dimensions	46-7/8"X22-7/8"X36-3/4"
Tank Dimensions	46-1/8"X22-1/4"X13-1/16"
Max Solvent Capacity	40 Gallons (151.4 L)
Max Pump Output	5.25 gal/Min (20L/Min)
Gross Weight	99.2 lbs (45 Kgs)



# ATD-8527



ORDERING PART#	ITEM#	PART DESCRIPTION
PRT8527-01	01	COVER
PRT8527-02	02	WORK BASKET
PRT8527-03	03	SPRING PAN
PRT8527-04	04	PIN
PRT8527-05	05	SAFETY PLATE
PRT8527-06	06	WORK SHELF
PRT8527-07	07	BODY
PRT8527-08	08	SPRING WASHER
PRT8527-09	09	NUT M5
PRT8527-10	10	O-RING
PRT8527-11	11	PLUG
PRT8527-12	12	SHELF
PRT8527-13	13	LEG
PRT8527-14	14	PAN SCREW
PRT8527-15	15	NUT
PRT8527-16	16	SPRING WASHER
PRT8527-17	17	SCREW
PRT8527-18	18	STRAIN RELIEF
PRT8527-19	19	CABLE AND PLUG
PRT8527-20	20	PUMP HOUSING

ORDERING PART#	ITEM#	PART DESCRIPTION
PRT8527-21	21	SCREEN
<b>PRT8524-116</b>	22	SWITCH
PRT8527-23	23	SWITCH BOX
PRT8527-24	24	FLEXIBLE PIPE
PRT8527-25	25	ELBOW SEAT
<b>PRT8524-106</b>	26	PUMP BODY (USE PRT8524-106)
<b>PRT8524-106</b>	27	PUMP BACK COVER (USE PRT8524-106)
PRT8527-28	28	FILTER COVER
PRT8527-29	29	PUMP HOUSING COVER
PRT8527-30	30	ELBOW
PRT8527-31	31	PLASTIC WASHER
PRT8527-32	32	SPIGOT
<b>PRT8524-106</b>	33	KNOB (USE PRT8524-106)
<b>PRT8524-106</b>	34	FILTER (USE PRT8524-106)
PRT8527-35	35	SEAL RING (USE PRT8524-106)
<b>PRT8524-106</b>	36	IMPELLER (USE PRT8524-106)
<b>PRT8524-106</b>	37	SHIN WASHER (USE PRT8524-106)
<b>PRT8524-106</b>	38	SEAL RING (USE PRT8524-106)
<b>PRT8524-106</b>	39	IMPELLER HOLDER (USE PRT8524-106)