

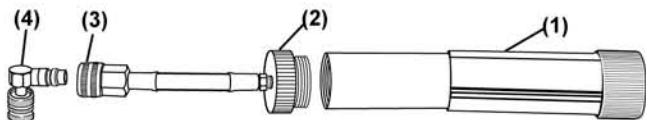


Mastercool Inc.
"World Class Quality"

DYE/OIL INJECTOR

53123

Dye Injection Instructions:



PLEASE USE CAUTION!!

- When injecting dye into a pressurized system, ALWAYS wear safety glasses and gloves!
- Never breathe refrigerant vapor!
- Never use the UV light without wearing the UV glasses!
- Lamp surfaces will get hot very quickly. DO NOT TOUCH THE LENS!

A. Purging air from the hose assembly

It is important to eliminate any air in the hose before injecting dye into the A/C system. (This process is necessary only once for the setup).

1. Hold the dye injector (1) upward while unscrewing the cap/hose assembly (2). Turn the handle of dye injector (1) counter clockwise all the way before filling. Fill the injector with dye. Replace cap/hose assembly, tightening securely.
2. While holding the assembly upward, start turning the handle (1) clockwise. Continue turning as dye enters the hose and pushes the air up. Use a pen to press the depressor of the coupler (3) to release the air. Repeat this process as needed until dye appears at the coupler's end.

B. Injection

1. Turn the A/C system and engine off!!
2. Connect injector to the low side service port of A/C system. Hold body of injector. Use (1) starting line on handle end as a guide. Turn handle clockwise to inject 1 application of dye. (Approximately 1 to 1 1/4 turn(s) for Concentrated Dye). (Approximately 3 1/2 turns(s) for Standard Dye).
3. Disconnect injector from the system and clean any excess dye left around the service port

DYE/OIL INJECTOR

53123

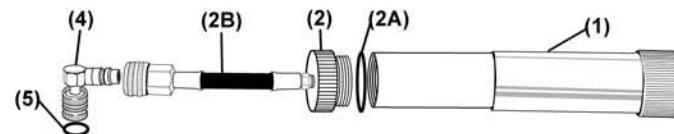
Dye Application Chart	
(AUTOMOTIVE)	1 Application per system (for a system using up to 10 oz. [300 ml] of lubricant)
(HVAC/R)	1 Application per system (for a system using up to 7 lbs. [3.2 kg] of refrigerant)

Oil Injection Instructions:

A. Follow the Dye Injection Instructions to purge and fill the container.

B. Injection

1. Turn the A/C system and engine off!!
2. Connect injector to the low side service port of A/C system. Hold body of injector. Use (1) starting line on handle end as a guide. Turn handle clockwise to inject 1 application of oil. (Approximately 3 1/4 turn(s) for 1/4 oz oil).
3. Disconnect injector from the system and clean any excess oil left around the service port



(Fig.)	Part #	Description
(1)	53223-001A	Dye Injector Body
(2)	53223-001B	Cap (only)
(2A)	53223-001C	O-Ring
(2B)	53223-001D	Hose Assembly
(4)	90333-UV	R12 (1/4")FL Shut-Off Valve
(5)	90336	O-Ring for 90333-UV

For Warranty Service:
Toll Free: 1-888-825-6989 or
E-mail: techs@mastercool.com



Mastercool Inc.
"World Class Quality"

One Aspen Drive, Randolph, NJ 07869-1103

53123 INJ-INST