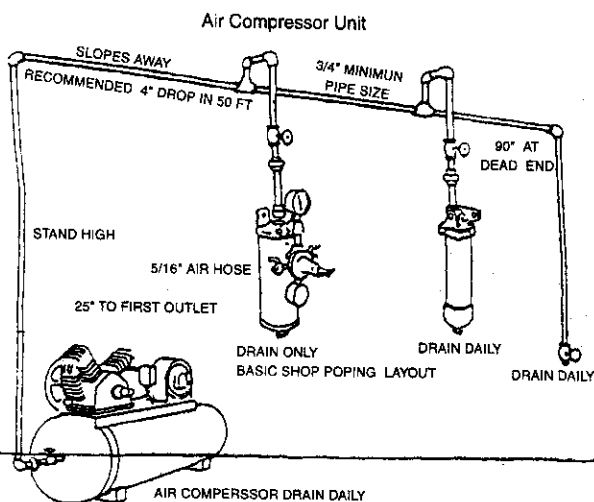


Star® S806 / L906 Series Air Filtration System

Our **AIRPURE** filtration systems help users take care of their air-operated tools by providing cleaner and more reliable air.

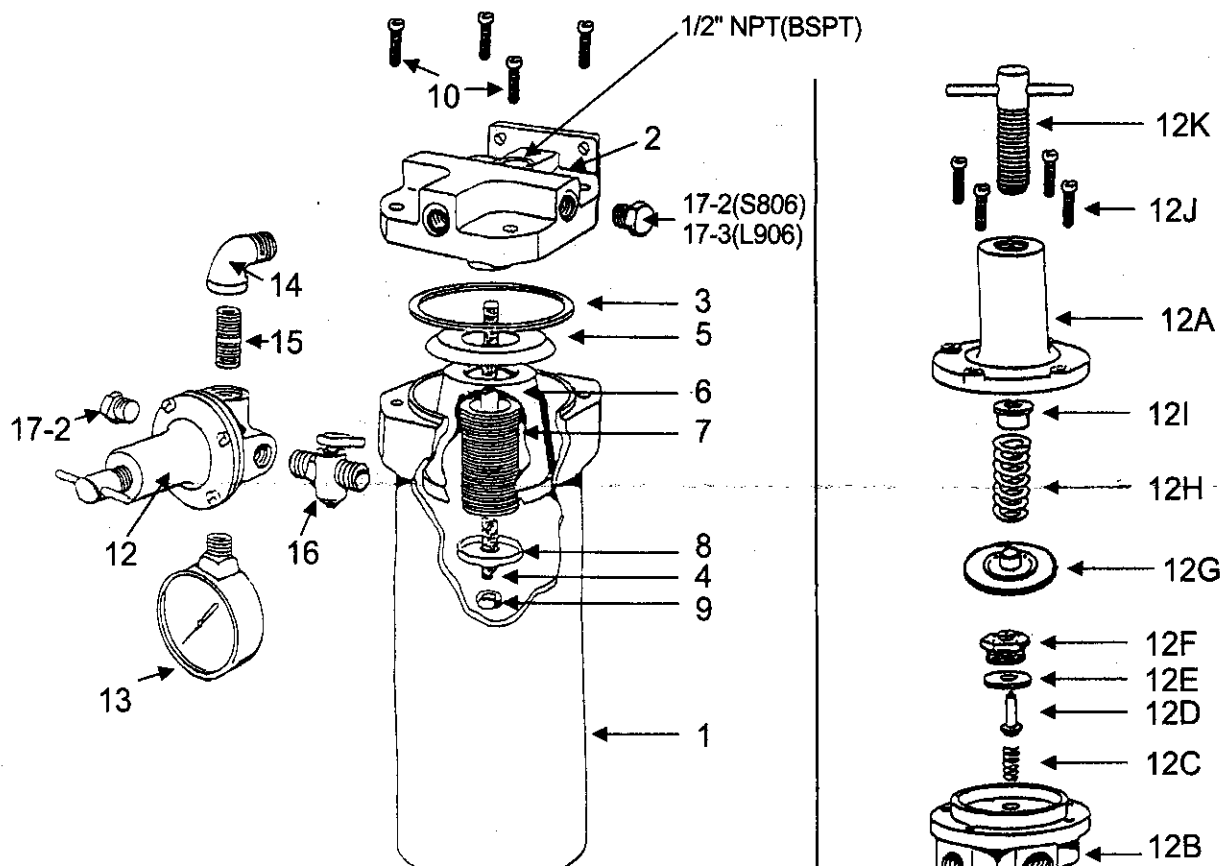
FEATURES AND BENEFITS:

- Filter and regulator in one
- Easy to install for light to medium industrial and automotive applications
- Remove water, oil and contaminants (down to $5\mu\text{m}$) from compressed air, and provide constant air supply
- Improve performance and useful life of air-tools
- Easy reusable/replaceable in-line filter
- Strong aluminum housing for extensive use
- Drain valve designed to empty filters without disassembling the unit
- Modular set-up for future upgrades with other **Star®** air filtration systems

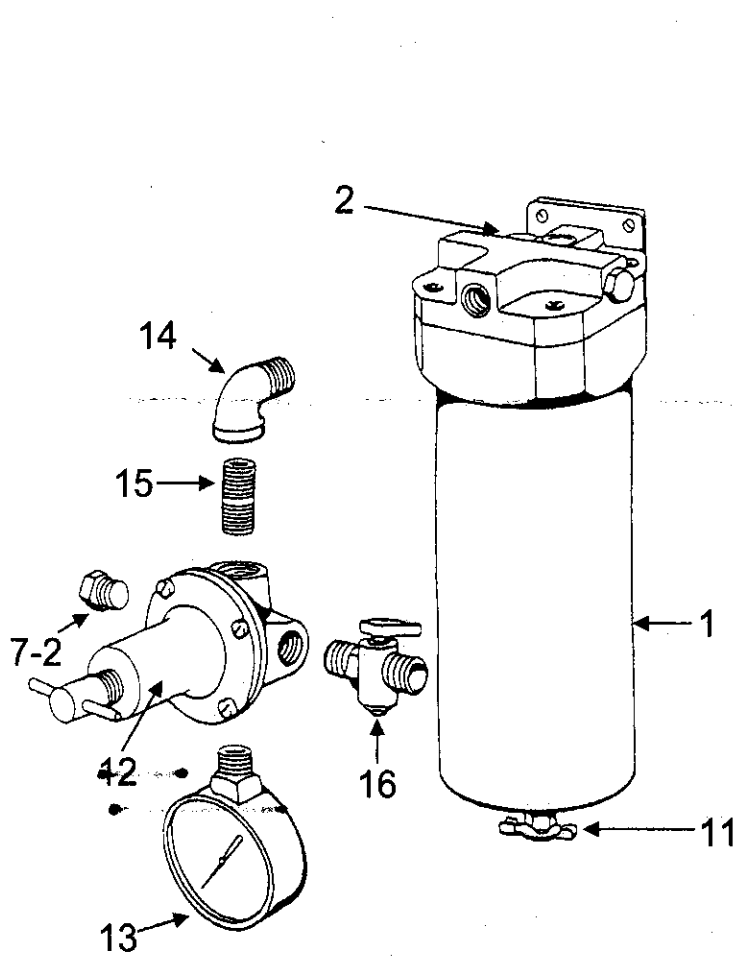


PART LIST

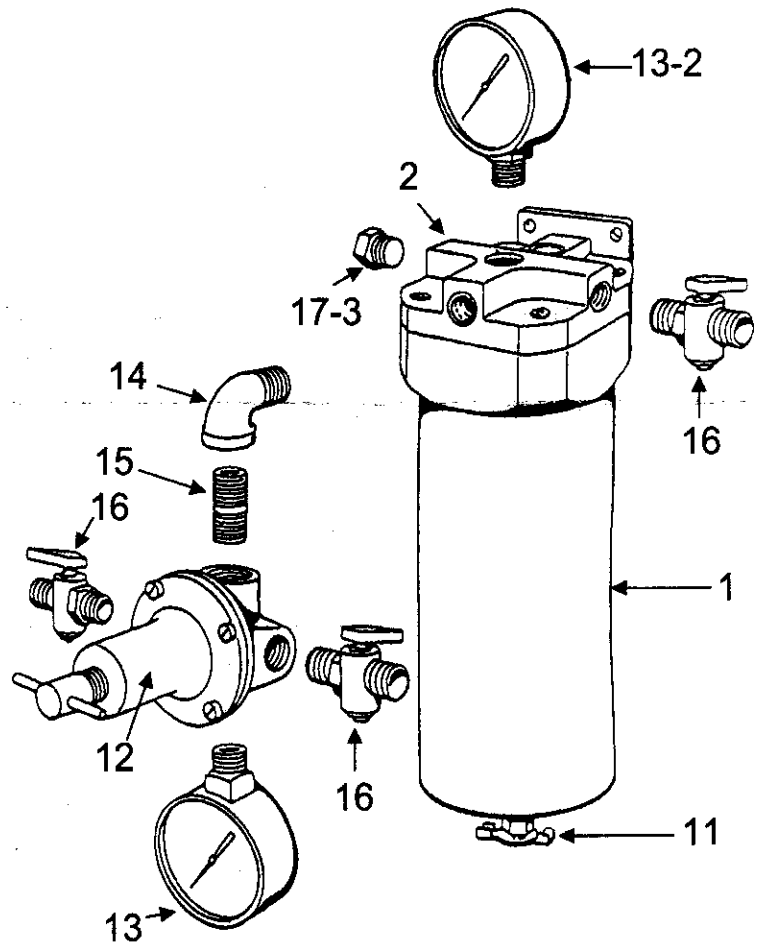
NO.	DESCRIPTION	NO.	DESCRIPTION	NO.	DESCRIPTION
1	Housing	11	Manual Drain	12I	Gasket
2	Cover	12	Regulator	12J	Head Cap Screws
3	Gasket (PU)	12A	Cover	12K	Adjusting Shaft
4	Tube	12B	Body	13	Air Gauge (100 lbs)
5	Baffle	12C	Spring	13-2	Air Gauge (200 lbs)
6	Plastic Bowl Guard	12D	Valve	14	90° Joint 3/8" NPT(BSPT)
7	Filter Element	12E	O-Ring	15	Joint Pipe 3/8" NPT(BSPT)
8	Clamping Ring	12F	Valve Seat	16	Ball Valve 1/4" NPS(BSP)
9	Nut	12G	Diaphragm Assembly	17-2	Plug (S806) 1/4" NPT(BSPT)
10	Head Cap Screws	12H	Diaphragm Spring	17-3	Plug (L906) 3/8" NPT(BSPT)



2618



Model: S806-A & L906-A



Model: L906-B

