



SPX Corporation
 655 Eisenhower Drive
 Owatonna, MN 55060-0995 USA
 Phone: (507) 455-7000
 Tech. Serv.: (800) 533-6127
 Fax: (800) 955-8329
 Order Entry: (800) 533-6127
 Fax: (800) 283-8665
 International Sales: (507) 455-7223
 Fax: (507) 455-7063
<http://www.otctools.com>

SPX POWER TEAM

SPX Corporation-Fluid Power
 5885 11th Street
 Rockford, IL 61109-3699 USA
 Phone: (815) 874-5556
 Tech. Serv.: (800) 477-8326
 Fax: (800) 765-8326
 Order Entry: (800) 541-1418
 Fax: (800) 288-7031
<http://www.powerteam.com>

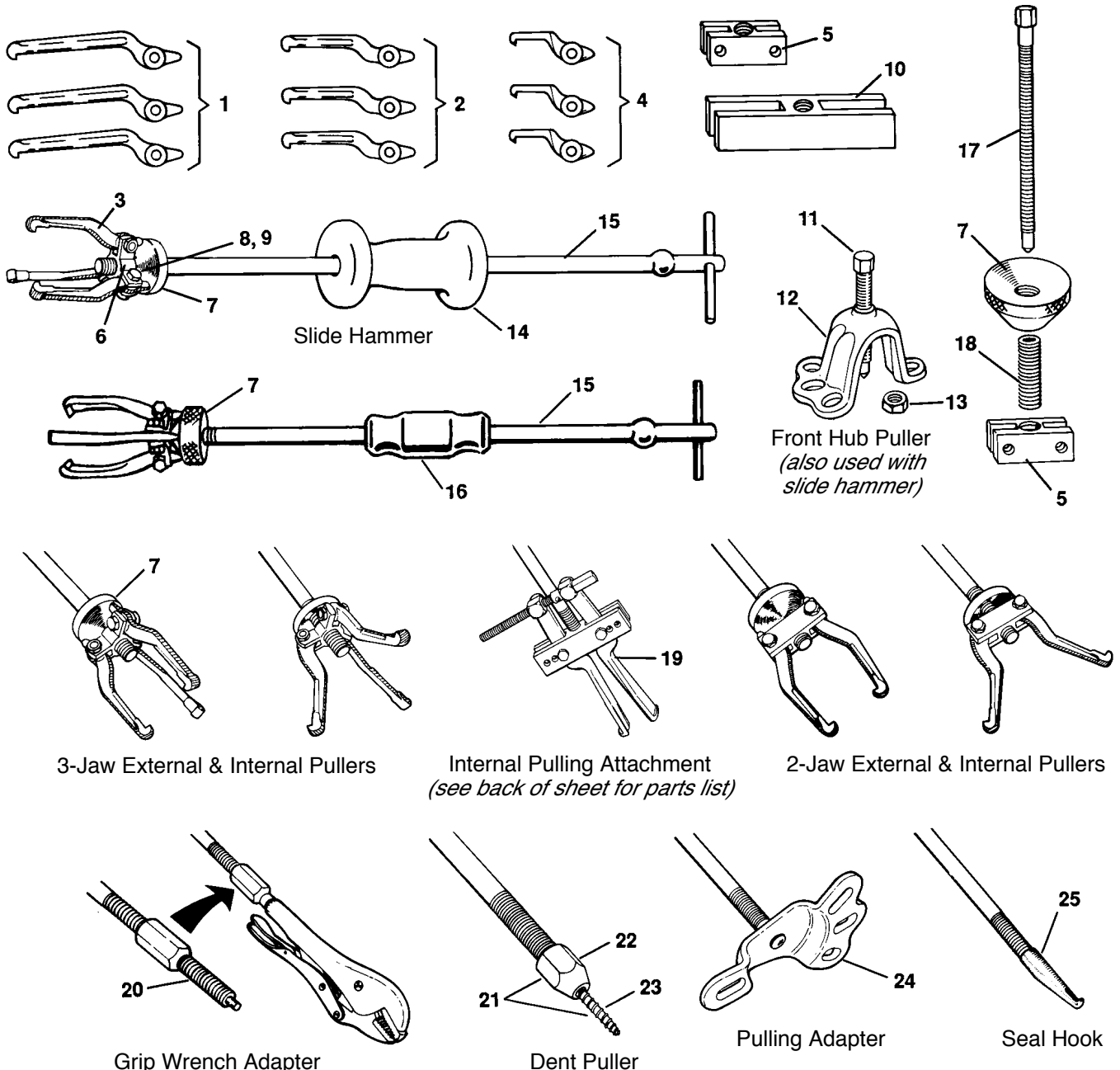
Form No. 104820

Parts List & Instructions

for:	1155	1176	1181
	1156	1177	1189
	1157	1178	7947
	1158	1179	7948

Slide Hammer Puller Sets

Slide hammer puller sets have several pulling attachments to give the user various methods for pulling, maintenance, and repair applications; the slide hammer exerts force when needed. Recommended assemblies for the slide hammer are shown in this parts list. *Note: Each set does not include all the attachments shown. Refer to the back of this sheet for the contents of each set.*



3-Jaw External & Internal Pullers

Internal Pulling Attachment
(see back of sheet for parts list)

2-Jaw External & Internal Pullers

Grip Wrench Adapter

Dent Puller

Pulling Adapter

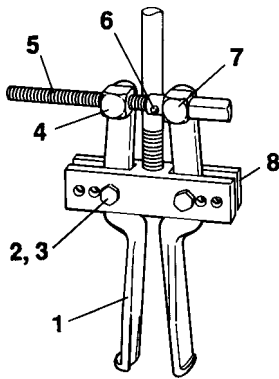
Seal Hook

Note: If the grip wrench has a double lead thread, it will be necessary to order a double lead adapter (218875).

Shaded area reflects the last revision made to this form.

Item No.	Part No.	Description	Catalog Slide Hammer Set No.										
			1155	1156	1157	1158	1176	1181	1178	1179	1189	7947	7948
1	44148	6-1/2" Internal / External Puller Jaw							3		3		3
2	44195	4-1/8" Internal / External Puller Jaw							3				
3	34698	3-3/4" Internal / External Puller Jaw						3	3	3	3	3	3
4	32054	2-3/8" Internal Puller Jaw							3		3		3
5	27241	Cross Nut						1	1	1	1	1	1
6	24544	3-Way Puller Head						1	1	1	1	1	1
7	24545	Cone						1	1	1	1	1	1
8	10384	Hex Jam Nut						3	3	3	3	3	3
9	22021	Hex Hd. Cap Screw						3	3	3	3	3	3
10	36578	Cross Block								1			
11	24833	Forcing Screw									1		1
12	520968	Puller Head									1		1
13	10394	Hex Jam Nut									1		1
14	34331	Hammer (5 lb.)	1			1		1		1	1	1	1
15	208627	Shank & T-bar Assembly	1	1	1	1	1	1	1	1	1	1	1
16	22185	Hammer (2-1/2 lb.)		1	1			1					
17	309321	Forcing Screw									1		1
18	215895	Sleeve									1		1
19	1152	Internal Pulling Attachment (see below)			1	1							
20	205378	Vise Grip Adapter (single-lead thread) Note: If the grip wrench has a double-lead thread, it will be necessary to order a double lead adapter (218875).									1	1	1
21	205377	Dent Puller (contains Items 22 & 23)								-	-		
22	205399	Retainer								1	1	1	1
23	104427	Self-Tapping Screw								1	1	1	1
24	31599	Pulling Adapter								1	1	1	1
25	27315	Seal Hook							1	1	1	1	1

Internal Pulling Attachment (1152)

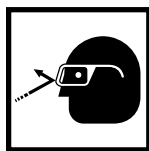


Item No.	Part No.	No. Req'd	Description
1	32137	2	4" Clearance Jaw
2	10054	2	Hex Hd. Cap Screw (3/8-24 x 1-1/2" Lg.)
3	10386	4	Jam Nut (3/8-24)
4	24847	1	Tapped Swivel
5	24846	1	Adjusting Screw
6	11560	1	Roll Pin
7	24848	1	Plain Swivel
8	33482	1	Puller Yoke

Safety Precautions



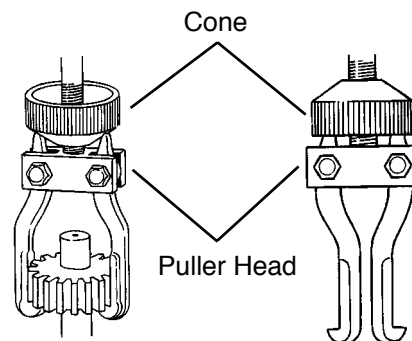
CAUTION: To avoid injury when using this tool,



- Wear eye protection that meets ANSI Z87.1 and OSHA standards.
- Cover the work with a protective blanket or canvas to reduce danger from breaking parts.

- Adjusting strap bolts must be tight on puller jaws.
- Puller legs and jaws must be in-line and the setup must be rigid.
- Apply force gradually. If maximum force has been applied and the work piece has not moved, use a puller with a larger capacity. Do NOT hit the part with a hammer in an attempt to jar it loose.

Important: When using the jaws in the spread or reversed position as shown, thread the cone as close to the puller head as possible to ensure a firm grip on the part.



Jaws Spread

Jaws Reversed